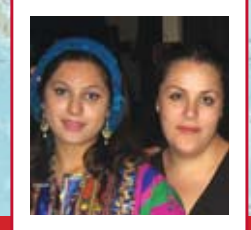
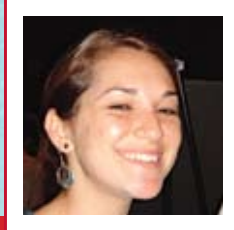


San Diego State University International Student Welcome Packet



Graduate Student Checklist to Enrollment

- 1 Register for New International Student Orientation
- 2 Clear your Health Insurance Requirement
- 3 Pay your Registration Fees
- 4 Create an SDSU WebPortal Account and Register for your Classes
- 5 Obtain your Visa and Review your Legal and Financial Requirements
- 6 Meet Immunization Requirements
- 7 Complete your Admission File
- 8 Check-in at the International Student Center



SAN DIEGO STATE
UNIVERSITY

SDSU Student Affairs
Bridges to Success

Register for New International Student Orientation

You are required to attend one of the mandatory orientation sessions held at the International Student Center. This orientation will provide you essential resources to help you academically succeed at SDSU and to ease your transition to the university. In order to register, you must return the International Student Confirmation form.

WHAT CAN YOU EXPECT TO DO AT ORIENTATION?

- Meet with a representative of the Graduate Division who can help you understand your program requirements
- Meet with an international student adviser who can verify your immigration status and answer your immigration questions
- Meet with current international students who can answer your questions about life at SDSU
- Complete health insurance requirements and find out more about your health insurance coverage
- Learn about ISC programs and activities
- Enjoy free lunch and receive free information about banking, transportation, on-campus jobs, cell phones, California driver's licenses, and much more.

- Make new friends
- Get to know the ISC staff

► **Thursday, January 15, 9 am**
Orientation for degree-seeking students on an F-1 visa.

► **Friday, January 16, 9 am**
Orientation for Exchange students on a J-1 visa.

Clear your Health Insurance Requirement

International Students at SDSU are required by law to have health insurance. An F-Hold on your registration prevents you from registering for your classes until you have cleared your health insurance requirement. You can temporarily clear your insurance requirement (and register for your classes) by completing and returning the International Student Confirmation Form with your signature in the Health Insurance Promissory Contract section. By signing the Promissory Contract, you promise to provide proof that you have an approved health insurance policy in effect by Thursday, January 15, 2009. If you do not, your registration will be cancelled.

Please note that it takes two days to clear your F-Hold after we have received your Promissory Contract.

***** Remember you MUST bring: your passport, VISA, I-20, I-94, and health insurance information or check/money order for health insurance.. *****



You must submit the International Student Confirmation Form by December 23, 2008; however you have until January 15, 2009 to fulfill the Health Insurance Requirement. It can be fulfilled in one of the three ways:

- 1 You can enroll online with your credit card. There are no additional fees to use your credit card. Please visit the ISC Web site at www.isc.sdsu.edu/Current/services_insurance.htm for student insurance options.

— OR —

- 2 When you arrive in San Diego, you can purchase health insurance at the ISC with a U.S. check, money-order or traveler's cheque (exact amount). Please be advised we cannot accept cash.
- 3 Show documented proof that you have an alternate insurance policy that meets all six of the California State University Requirements. These requirements are very strict and there are no exceptions. For a list of requirements, please go to www.isc.sdsu.edu/prospective/admit_graduate2.html

It is strongly recommended that you buy the insurance offered through the ISC. It complies with all of the mandated requirements and it offers a special group rate and features a reduced deductible and a claims processing service.

Pay your Registration Fees

You must pay your spring semester registration fees of \$2,231** before you can register for your classes. It takes at least two weeks to process the registration fee. You will be notified of your registration date in your SDSU WebPortal account. The earlier you register for classes, the more course availability you will find. Courses at SDSU fill up quickly, so it is wise to register early. You can always make changes to your class schedule later.

It is possible to pay your fees online at <http://bfa.sdsu.edu/fm/co/sfs>. There is an additional fee when you pay online by credit card. When you arrive in San Diego and before classes begin, you will also be required to pay your non-resident tuition of \$339** per unit.

** Please note that registration fees and tuition are subject to change. For more information, please refer to the Cashier's Web site at <http://bfa.sdsu.edu/fm/co/sfs>

Create an SDSU WebPortal Account and Register for your Classes Online

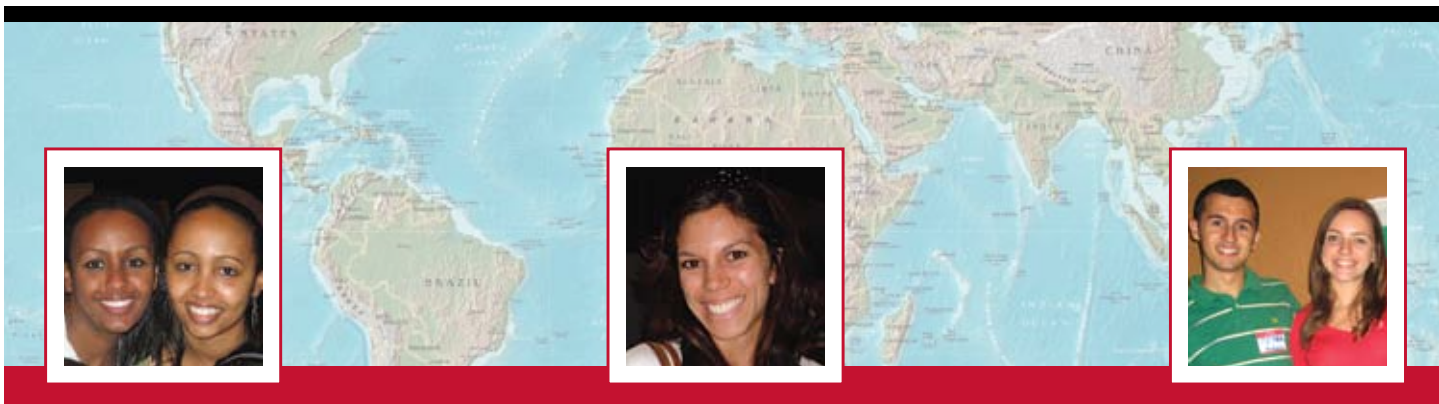
REGISTERING FOR YOUR CLASSES

- 1 **Contact your Department Adviser**
You should contact your Department Adviser for information about which classes you should choose. You can find out who your adviser is by downloading the adviser list at www.isc.sdsu.edu/Documents/Grad_Advisors.pdf. Remember to contact your adviser before registering for classes.
- 2 **Review the Class Schedule and the Graduate Bulletin**
The Class Schedule lists all classes offered at SDSU for each semester and is available online at www.sdsu.edu/schedule. The Graduate Bulletin provides a description of each class as well as your department requirements. It is available at <http://coursecat.sdsu.edu/bulletin>
- 3 **Create an SDSU WebPortal Account**
You must create an SDSU WebPortal account to access important services available to admitted students, including Application Status Check, Update E-mail/Address, Applying for on-campus housing, and My Registration. To create an account, visit www.sdsu.edu/portal. Your Red ID User Name is printed on your admission letter. Your Pin/Password is initially set to equal your date of birth (MMDDYY). For example, if you were born on December 6, 1983, your PIN is 120683. During the account activation process, you will create a new permanent PIN that is not your birthdate. You must have a working e-mail address to create a portal account. A temporary PIN will be sent to your e-mail address, and you must use this temporary PIN to activate your account.
- 4 **Register for Classes Online**
When you know the classes you want, you can register online using the "My Registration" menu option in your WebPortal account. Use your Red ID and password to log into your account and add your classes.

Obtain your Visa and Review your Legal and Financial Requirements

PAY SEVIS FEE AND OBTAIN YOUR VISA

A valid student visa is required for entry to the U.S. (Note: Canadian



citizens do not require visas but must pay the SEVIS fee prior to entering the U.S.). Before applying for the visa, you must pay the \$100 SEVIS fee. To find information on paying the SEVIS fee, go to www.ice.gov/sevis/i901/index.htm. The easiest way to pay the fee is online. If you are outside the U.S. and do not already have a valid student visa, you must apply for one at the nearest U.S. Consulate. View <http://usembassy.state.gov> for information about your consulate's process for non-immigrant visa applications and to download the visa application forms. When you apply for your visa, you will need to show your valid passport, I-20 form, proof of sufficient funds available to meet expenses, and proof that you have paid the SEVIS fee.

You will receive an I-94 (small white card) on the airplane that the Department of Homeland Security (DHS) official will staple into your passport next to your visa. Please safeguard your I-94; you need this document to prove your legal status in the U.S. When you enter the U.S., you will present your valid visa and I-20 to the DHS official. Canadian citizens must present the I-20, financial documentation, and proof of SEVIS payment.

LEGAL REQUIREMENT TO TRANSFER YOUR I-20

If you are already attending school in the U.S., your I-20 may not have been sent to you. SDSU is unable to issue your I-20 until your current school "releases" your SEVIS record to SDSU. Notify your International Student Adviser at your current school of your intent to transfer to SDSU and have them release your SEVIS record to San Diego State University SND214F00142000. When your International Student Adviser "releases" your SEVIS record, SDSU will issue you an SDSU I-20 for transfer.

LEGAL REQUIREMENT: FULL COURSE OF STUDY

As an international student on a student visa, you are required to enroll as a full-time student each and every semester; this means a minimum of 9 units per semester for graduates. Courses in Extended Studies or Open University do not count toward full-time status.

FINANCIAL PLANNING

Plan to have funds readily available for your initial expenses – tuition, housing, health insurance, books and miscellaneous expenses. Since bank drafts can take several weeks to clear, you will need traveler's checks or World Money Orders. Plan to have

at least \$5,000 available upon arrival. A breakdown of expenses is shown on www.sa.sdsu.edu/isc/prospective/sdsu_money.html

EMPLOYMENT OPPORTUNITIES

Do not plan on employment as a means of financial support. The Department of Homeland Security does not allow off-campus employment during a student's first academic year. On-campus employment is allowed, but will not be immediately available to you due to restrictions in issuance of the required Social Security Number. Spouses of F-1 students are not eligible for employment or for enrollment in school.

Note: If you have any questions whatsoever regarding your immigration status, contact the International Student Center immediately to talk to an International Student Adviser.

Meet Immunization Requirements

All students are required to comply with the following immunization requirements during their first semester at SDSU to be able to register for classes their second semester.

MEASLES/RUBELLA

If you were born on or after January 1, 1957, you are required to show proof of immunity to measles, (Rubeola) and rubella (German measles) within your first semester at SDSU. Submit medical documentation to Student Health Services proving immunity OR receive the measles and rubella vaccinations (available at Student Health Services for a fee).

HEPATITIS B

If you are age 18 or under when you begin studying at SDSU, you are also required to provide proof of immunization against hepatitis B within your first semester. Submit medical documentation to Student Health Services proving immunity OR proving that you have started the three-dose series of hepatitis B vaccine (you may receive the vaccine at Student Health Services or at your private medical provider). If you start the series during your first semester, you must complete the series by the end of your third semester. (Student Health Services must see medical documentation of at least one immunization per semester to prevent an immunization hold on the next semester's registration).

WHAT IS ADEQUATE PROOF OF PRIOR VACCINATION?

Medical documentation of prior immunization requires the date, type of vaccination, and a doctor's or nurse's signature, initials or office stamp. Students may also receive vaccines at Student Health Services. For more information about immunization requirements, visit www.sdsu.edu/shs or call 619-594-HEALTH (4325).

COMPLETE YOUR ADMISSION FILE

If your admission to SDSU was provisional, this means that official documents are still missing from your file. Your file must be completed this semester in order for you to be eligible to register for next semester. To check if you still need to submit official documents, email egriego@mail.sdsu.edu. If your admission to SDSU was conditional, this means that your department has placed special conditions on your admission. It is very important that you meet with your department adviser as soon as possible to understand these conditions.

CHECK-IN AT THE INTERNATIONAL STUDENT CENTER

It is very important to report to the ISC to complete the check-in process upon your arrival in the U.S. This is mandatory, and failure to check-in at the ISC could result in termination of your SEVIS record and loss of you F-1 status. During the check-in, you will be able to meet one-on-one with an ISC staff person. This person will review and make copies of your immigration documents, ensure that you're on the right track to get your studies started and assist you with any questions you may have.

For questions, contact the:

International Student Center

San Diego State University
5500 Campanile Drive
San Diego, CA 92182-5101

Web site: www.sdsu.edu/international

E-mail: intl_admissions@sdsu.edu

Phone: (619) 594-0770

Fax: (619) 594-1507

Remember to bring your immigration documents, insurance documents, and/or a check, credit card or money order to purchase the required health insurance policy.

